

RESOLUTION NO.

02-95

RESOLUTION CREATING
RURAL SPECIAL IMPROVEMENT MAINTENANCE DISTRICT # 690M
MYSTIC MOON SUBDIVISION

WHEREAS, a Petition signed by more than Sixty Percent (60%) of the Freeholders of the proposed district has been submitted to the Board of County Commissioners for creation of a rural improvement maintenance district for the maintenance of said streets; and,

WHEREAS, the boundaries of the proposed district are described as Lots 1-5, Mystic Moon Subdivision, (Exhibit A) and more particularly described in Exhibit B (map); and,

WHEREAS, all of the costs of the district shall be assessed equally on a per lot method for existing and future lots; and,

WHEREAS, the district shall be considered a district to exist perpetually unless included within another district providing the same services or assumed by a municipality; and,

WHEREAS, now is the date and time duly noticed and published as required by law for the Board of County Commissioners of Yellowstone County to hear and pass upon all protests that may be made against the making of said maintenance district; and,

WHEREAS, no protests have been delivered to the County Clerk since the duly published first notice of the passing of the Resolution of Intention; and,

WHEREAS, the Board of County Commissioners has acquired the jurisdiction to order the improvements pursuant to Section 7-12-2113, M.C.A.

NOW, THEREFORE, BE IT HEREBY RESOLVED, that the Board of County Commissioners of Yellowstone County, Montana, deeming the public interest or convenience require, and having acquired jurisdiction, hereby creates the following Rural Special Improvement District:

1. **NUMBER OF DISTRICT.** Said Rural Special Improvement District shall be designated as District No. 690M.
2. **DESCRIPTION OF DISTRICT.** The exterior boundaries of the District are described in Exhibits A and B.
3. **DESCRIPTION OF IMPROVEMENTS, DESCRIPTION OF MAINTENANCE, METHOD OF ASSESSMENT, AND ESTIMATED COSTS.** Assessments collected on behalf of this district shall be used for the maintenance, preservation, and repair of the streets located within the boundaries of this district. All of the costs of the district shall be assessed equally on a per lot method for existing and future lots. Estimated costs are shown in Exhibit D, but costs shown are not exclusive of other eligible street expenditure.
4. **DURATION.** The district shall be deemed to be perpetual in nature unless absorbed and replaced by another district or municipality.
5. **HEARING.** A hearing on the intention to create the district shall be held on **Tuesday, November 19, 2002, at 10:15 a.m.**, in the Commissioners' board Room 403A, fourth floor, Yellowstone County Courthouse, 217 N. 27th Street, Billings, Montana.
6. **NOTICE.** The County Clerk and Recorder is authorized and directed to publish a copy of the Notice of Passage of Resolution of the Intention to Create in the Billings Gazette, a newspaper of general circulation printed and published in the City of Billings, Yellowstone County, Montana on November 8th and 15th, 2002; to post a copy of the Notice in three public places within the boundaries of the District; and to mail a copy to every person who is an owner or agent of every person, firm, or corporation owning property in the proposed District, listed in his name upon the last completed assessment roll, at his last known place of residence on the same day the Notice is first published.

DONE BY ORDER of the Board of County Commissioners, Yellowstone County, Montana, this 19th day of
November, 2002

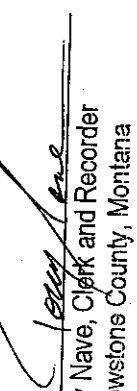
BOARD OF COUNTY COMMISSIONERS
YELLOWSTONE COUNTY, MONTANA


James A. Ziegler, Sr., ~~Chairman~~


Bill Kennedy, Member


Jim E. Retvo, Member

(SEAL)
ATTEST:


Tony Nave, Clerk and Recorder
Yellowstone County, Montana

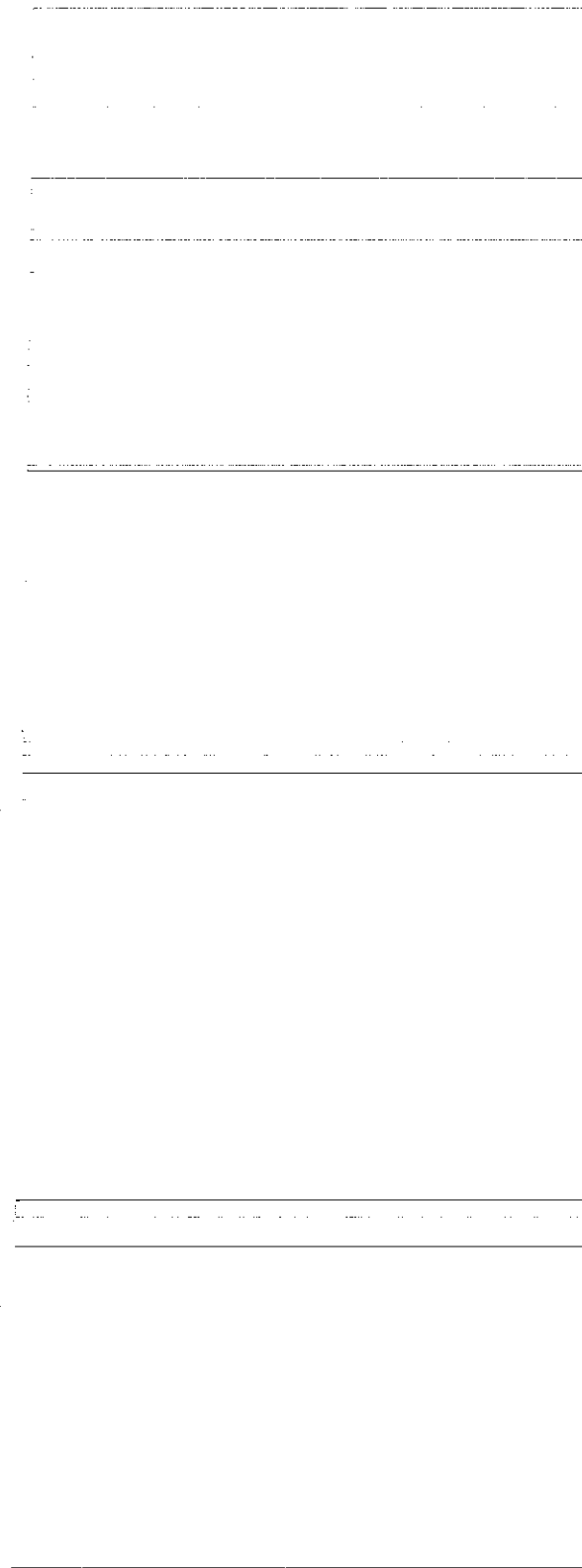


Exhibit A

PETITION TO ESTABLISH A RURAL SPECIAL IMPROVEMENT DISTRICT (RSID)

SECTION B

LEGAL DESCRIPTIONS & OWNERSHIP REPORTS (ATTACHED)

LOTS 1, 2, 3, 4, and 5 Mystic Moon Subdivision

1/4 section - NW 1/4 SW 1/4 SW 1/4

Section 21

Township - 1S

RANGE 25E

Exhibit B

Mystic Moon Subdivision
IN THE NW1/4 SW1/4 SECTION 21, T.1S., R.25E., P.M.M.
YELLOWSTONE COUNTY, MONTANA

Dick D. & Regena R. Englert
by: Harlan M. Lund, R.L.S. 1827S
Scale: 1"=50' Billings, Montana November 2001

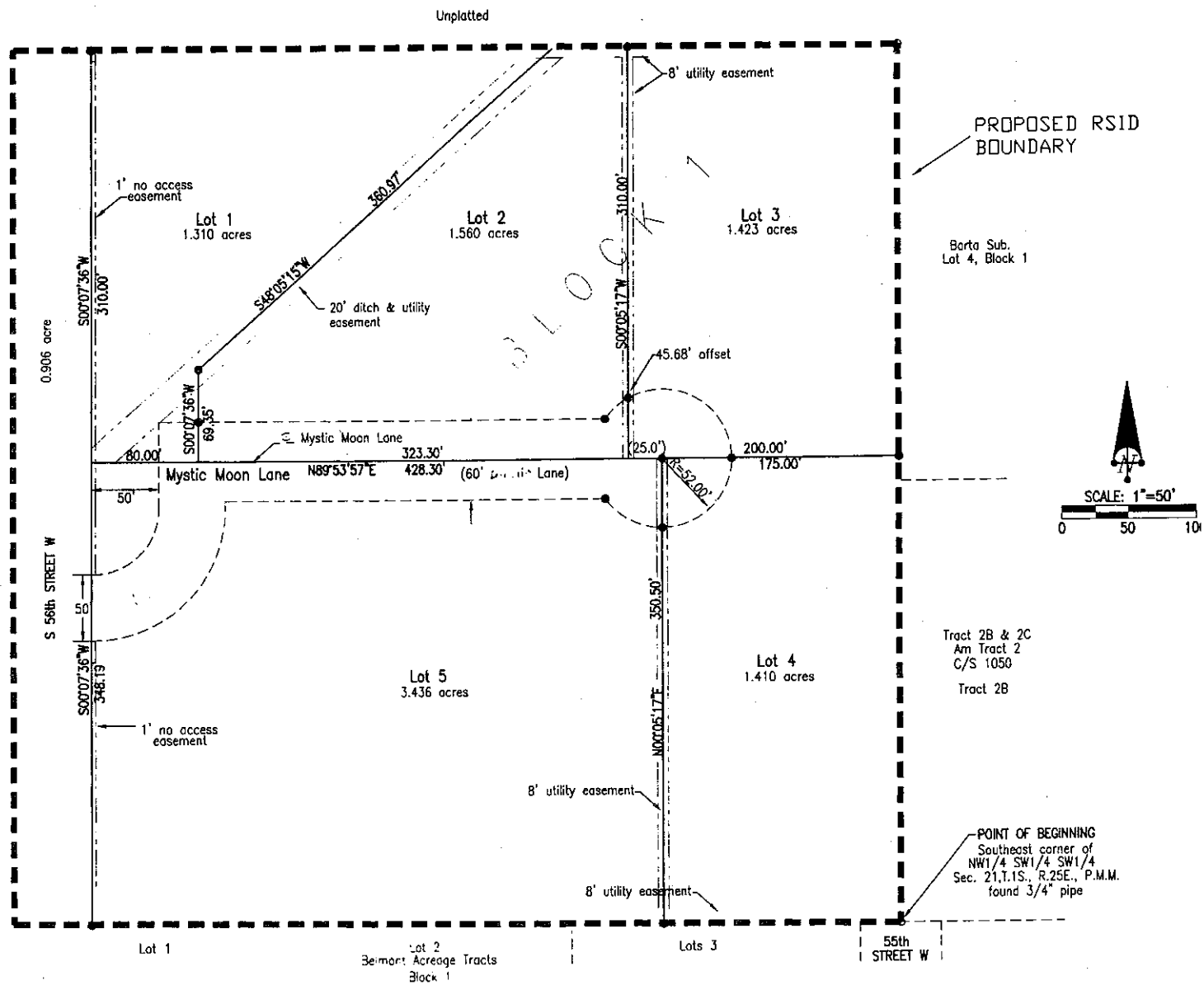


Exhibit C

PETITION TO ESTABLISH A RURAL SPECIAL IMPROVEMENT DISTRICT (RSID)

**SECTION D
METHOD OF ASSESSMENT**

CHOOSE A METHOD OF ASSESSMENT:

Equal Amount: _____

Front Footage: _____

Other (Describe): _____

Square Footage (Please list the square footage for each lot within the proposed district):

Property Owner	Lot & Block, Subdivision or C/S	Total Square Footage

Exhibit D

PETITION TO ESTABLISH A RURAL SPECIAL IMPROVEMENT DISTRICT (RSID)

**SECTION C
ESTIMATED ANNUAL MAINTENANCE COST**

FALL MAINTENANCE:

ACTIVITY/IMPROVEMENT	ESTIMATED COST
Snow Removal (200 ⁰⁰ /HR x 2 hours)	\$ 400.00
Road Grading (215 ⁰⁰ /HR x 4 hours)	\$ 860.00

WINTER MAINTENANCE:

ACTIVITY/IMPROVEMENT	ESTIMATED COST
Snow Removal (200 ⁰⁰ /HR x 2 hours)	\$ 400.00
	\$

SPRING MAINTENANCE:

ACTIVITY/IMPROVEMENT	ESTIMATED COST
Road Grading (215 ⁰⁰ /HR x 4 hours)	\$ 860.00
	\$

SUMMER MAINTENANCE:

ACTIVITY/IMPROVEMENT	ESTIMATED COST
	\$
	\$

TOTAL ESTIMATED ANNUAL MAINTENANCE COST: \$ 2,520.00

These estimated costs were prepared by JTL Group, Inc.
on 10/8/02.

P:\XXXX\PROCEDUR\RSID

